

Rotary Impeller Mixing Assemblies



Single-Use Mixing Reinvented for Real-World Compatibility

Meissner offers a comprehensive suite of single-use mixing technologies, including our Saltus® M200 mixing platform, FlexFill® and QuaDrum® based gentle recirculation assemblies, and our FlexGro® rocker-style assemblies. To support manufacturers seeking alternatives compatible with existing mixing installations, we've expanded our portfolio to include mixing assemblies engineered to retrofit leading magnetic and levitating impeller platforms — including widely installed solutions like Millipore's Mobius® MIX.

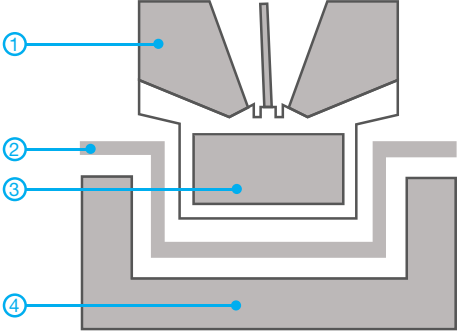
Our Rotary Impeller Mixing Solutions (RMS) are developed to integrate seamlessly into your existing mixing infrastructure — with biocontainer assemblies designed to fit your current tanks and connect directly to associated drive units. Whether replacing or augmenting original supply, RMS provides a drop-in solution that maintains critical process parameters while reducing risk associated with single-source dependencies. This approach showcases Meissner's commitment to manufacturing continuity, system compatibility, and long-term supply assurance.

All RMS assemblies are constructed with Meissner's high-performance TepoFlex® multi-layer polyethylene film — engineered for strength, purity, and durability. Free from slip agents and exhibiting ultra-low extractables, TepoFlex® delivers consistent performance with exceptional quality. The RMS portfolio continues to expand in compatibility with third-party platforms. For current options, visit www.meissner.com/rotary-impeller-mixing, or contact Meissner directly.



Platform Compatibility

Meissner's RMS mixing program continues to expand in scope in terms of compatibility with third-party mixing platforms. A compatibility summary is provided in the table below. Contact your Meissner sales representative for the most recent developments and program expansions.

RMS Compatibility	Nominal Mixer Volume	Standard Working Volume	Technology
Mobius® MIX	100 L	9 - 100 L	<div>Levitating, Externally Driven</div> <div>Levitating Impeller ①</div> <div>Impeller Seat ②</div> <div>Internal Magnet ③</div> <div>Externally Driven Electromagnetic Drive ④</div> 
	200 L	23 - 200 L	
	500 L	26 - 500 L	

Assembly Configurations

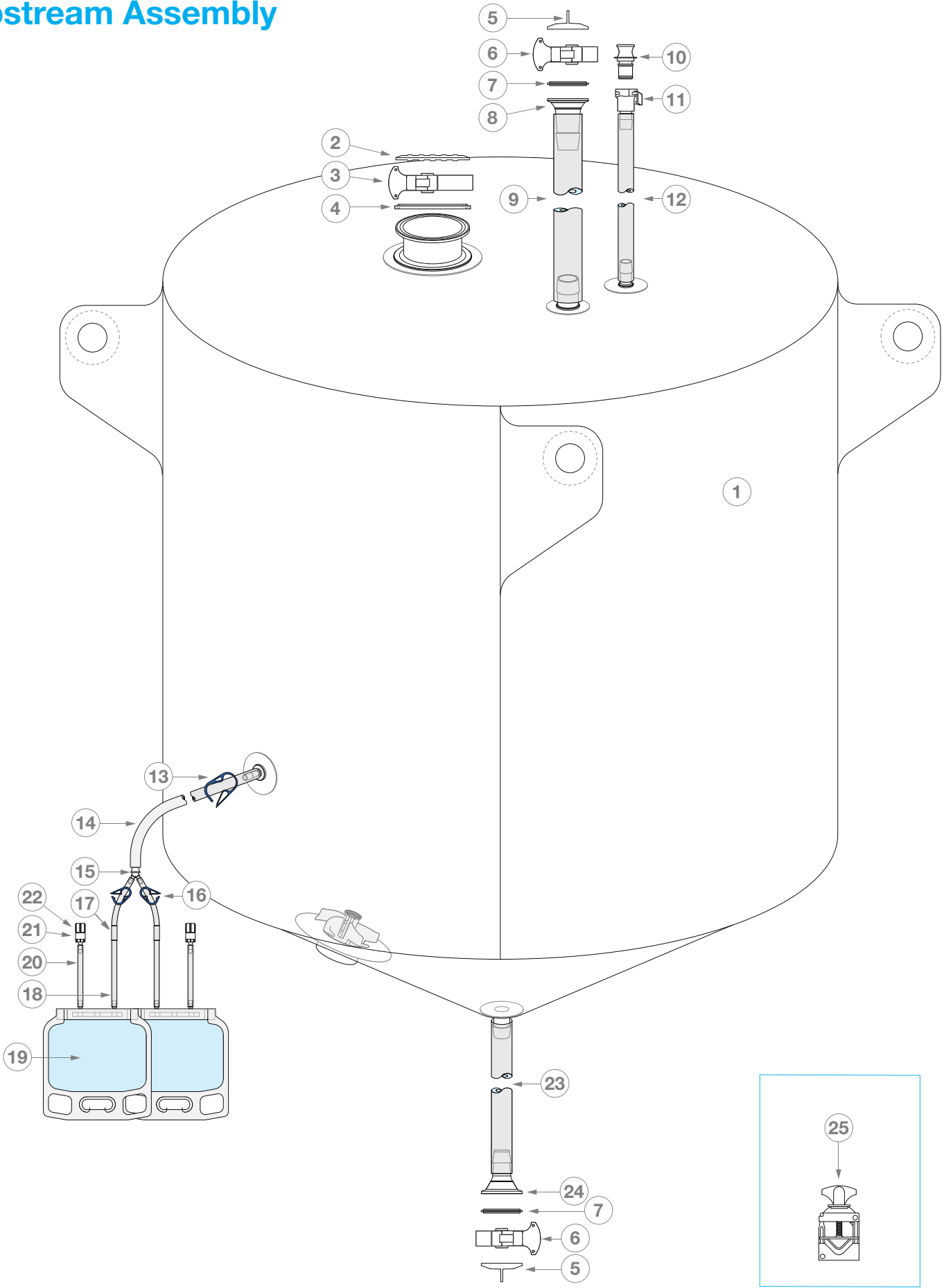
Meissner offers standard RMS mixing assembly configurations that are representative of typical upstream and downstream applications, as well as offering customization options for your unique process.

Upstream Applications

Bill of Materials - Representative of RMS6109B-N00-C0600-01

ITEM	DESCRIPTION	MATERIAL	QTY
1	200 L TepoFlex® Mixing Biocontainer	TepoFlex®	1
2	3" TC Blind Cap	Polypropylene	1
3	3" TC Clamp	Polyketone	1
4	3" TC Gasket	Platinum Silicone	1
5	1 1/2" TC Blind Cap	Polypropylene	2
6	1 1/2" TC Clamp	Polyketone	2
7	1 1/2" TC Gasket	Platinum Silicone	2
8	1" HB x 1-1/2" TC Adapter	Polypropylene	1
9	1" x 1-3/8" Pharma-50 Tubing, 36" Length	Platinum Silicone	1
10	Sealing Plug, MPX	Polycarbonate	1
11	Coupling Body, 1/2" HB, MPX	Polycarbonate	1
12	1/2" x 3/4" Pharma-50 Tubing, 36" Length	Platinum Silicone	1
13	Ratchet Pinch Clamp, Medium	Polypropylene	1
14	1/4" x 7/16" Pharma-50 Tubing, 6" Length	Platinum Silicone	1
15	1/4" x 1/8" x 1/8" HB Y-Fitting	Polypropylene	1
16	Ratchet Pinch Clamp, Small	Polypropylene	2
17	Aseptic Pinch Pipe Disconnecter	Metal Alloy	2
18	1/8" x 1/4" M-Flex® Tubing, 6" Length	TPE	2
19	50 mL End-Ported Biocontainer	TepoFlex®	2
20	1/8" x 1/4" M-Flex® Tubing, 3" Length	TPE	2
21	1/8" HB Swabable Valve/Needleless Injection Site	Polycarbonate/Silicone	2
22	Male Luer Cap	Polycarbonate	2
23	3/4" x 1" Pharma-50 Tubing, 60"	Platinum Silicone	1
24	3/4" HB x 1-1/2" TC Adapter	Polypropylene	1
25	Heavy Duty Tubing Clamp, Large	Nylon	1

Upstream Assembly



Downstream Applications

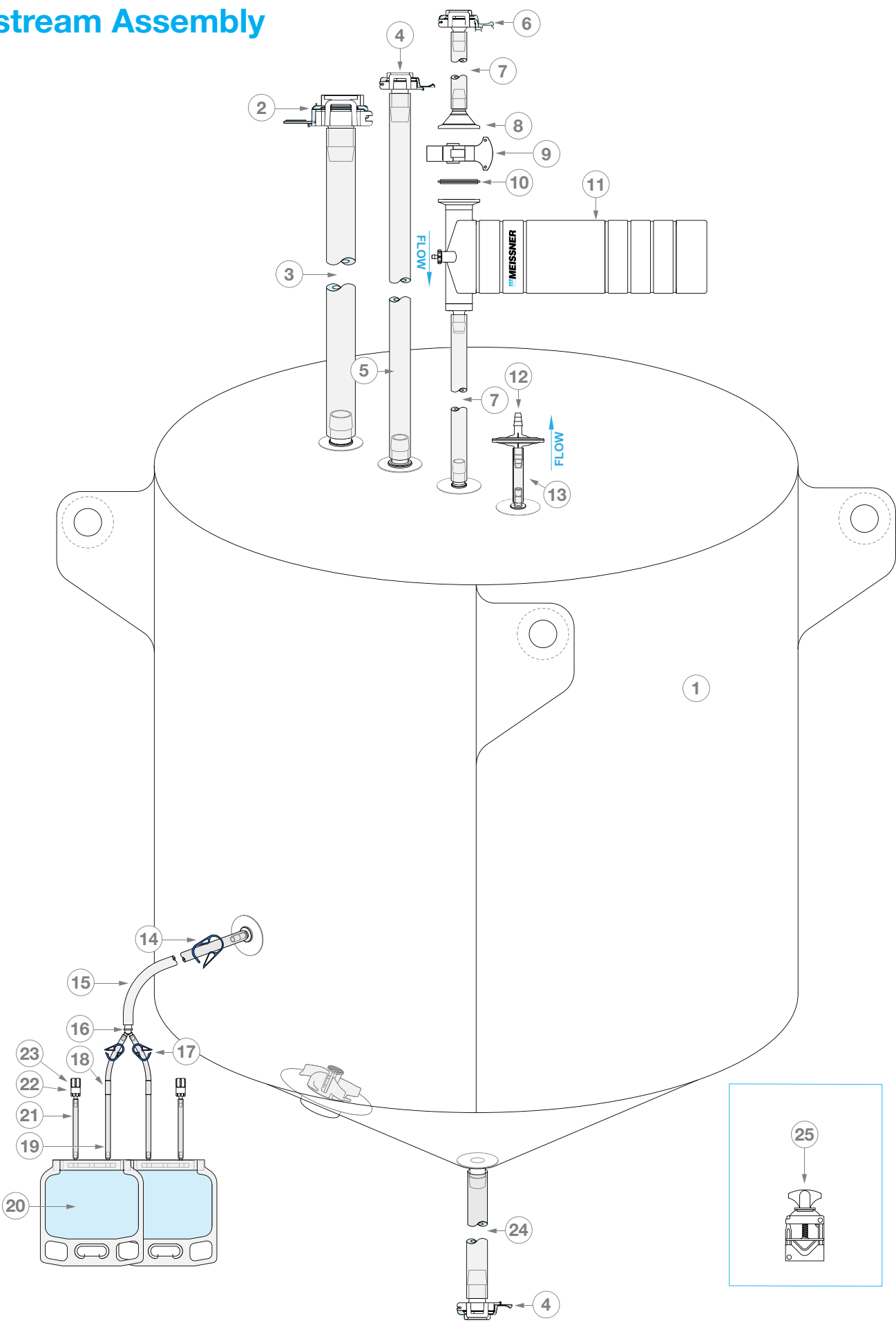
Bill of Materials - Representative of RMS7109B-V02-C0600-01

ITEM	DESCRIPTION	MATERIAL	QTY
1	200 L TepoFlex® Mixing Biocontainer	TepoFlex®	1
2	Aseptic Connector, 1" HB, AseptiQuik® L	Polypropylene	1
3	1" x 1 3/8" Pharma-50 Tubing, 36" Length	Platinum Silicone	1
4	Aseptic Connector, 3/4" HB, AseptiQuik® G	Polycarbonate	2
5	3/4" x 1" Pharma-50 Tubing, 36" Length	Platinum Silicone	1
6	Aseptic Connector, 1/2" HB, AseptiQuik® G	Polycarbonate	1
7	1/2" x 3/4" Pharma-50 Tubing, 12" Length	Platinum Silicone	2
8	1/2" HB x 1-1/2" TC Adapter	Polypropylene	1
9	1 1/2" TC Clamp	Polyketone	1
10	1 1/2" TC Gasket	Platinum Silicone	1
11	Meissner UltraCap® H.D. Filter	PP/SteriLUX®	1
12	Meissner 50 mm Filter	PP/Steridyne®	1
13	1/4" x 7/16" Pharma-50 Tubing, 4" Length	Platinum Silicone	1
14	Ratchet Pinch Clamp, Medium	Polypropylene	1
15	1/4" x 7/16" Pharma-50 Tubing, 6" Length	Platinum Silicone	1
16	1/4" x 1/8" x 1/8" HB Y-Fitting	Polypropylene	1
17	Ratchet Pinch Clamp, Small	Polypropylene	2
18	Aseptic Pinch Pipe Disconnecter	Metal Alloy	2
19	1/8" x 1/4" M-Flex® Tubing, 6" Length	TPE	2
20	50 mL End-Ported Biocontainer	TepoFlex®	2
21	1/8" x 1/4" M-Flex® Tubing, 3" Length	TPE	2
22	1/8" HB Swabable Valve/Needleless Injection Site	Polycarbonate/Silicone	2
23	Male Luer Cap	Polycarbonate	2
24	3/4" x 1" Pharma-50 Tubing, 60"	Platinum Silicone	1
25	Heavy Duty Tubing Clamp, Large	Nylon	1

Customization Options

Mixing biocontainers can be fitted with customer-specified porting, tubing lengths, connectors, end fittings, and dip tubes to accommodate your process requirements. Our Applications Engineering team can assist both in the customization of a mixing assembly for your specific needs and in the overall optimization of designs surrounding your mixing process.

Downstream Assembly



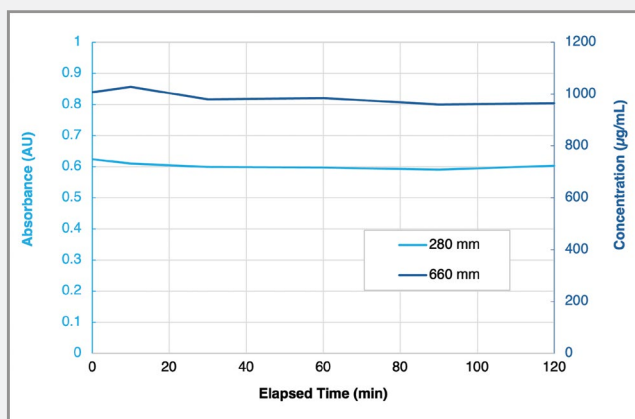
Mixing Performance

As part of qualifying our RMS mixing assemblies, homogeneity and shear data has been generated to demonstrate mixing performance. Data specific to Mobius® MIX platform compatible RMS mixing assemblies is provided below, and additional mixing qualification data is available upon request.

Implementation Support

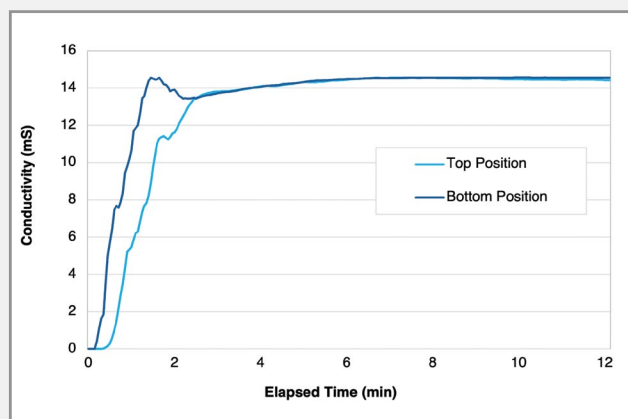
Our cross-functional RMS program team is available to assist with your end-to-end mixing needs. To supplement currently available homogeneity and shear study data for assistance with adoption in critical applications, Meissner can support the generation of process-specific data through supplying prototypes for running pre-established assays at customer sites or by performing in-house studies through our Meissner Technical Services (MTS) Team. These studies can analyze performance specific to your application and address any additional mixing performance Critical Quality Attributes, such as particulate generation, required for qualification.

Protein Degradation



Worst case conditions (23 L minimum working volume and 500 RPM) were used to assess shear for a solution of a mg/mL BSA in 0.004% PS 80 + 0.01M PBS. Absorbance and protein concentration was determined using UV-Vis at 280 and 660 nm.

Homogeneity



Homogeneity was assessed by comparing conductivity at the top and bottom for 200 L of fluid within an RMS mixing assembly upon addition of 1X PBS. At 500 RPM, complete mixing is achieved as shown by strong convergence of conductivity readings just after 2 minutes.

TepoFlex®, Saltus®, FlexFill®, QuaDrum®, FlexGro®, and One-Touch® are registered trademarks of Meissner Filtration Products, Inc.

Mobius® is a registered trademark of Merck KGaA.

AseptiQuik® is a registered trademark of Colder Products Company.

© 2025 Meissner Filtration Products, Inc. All Rights Reserved.

Meissner Headquarters
1001 Flynn Road • Camarillo, CA 93012 • USA
+1.805.388.9911 • www.meissner.com

